



School Guide

For pupils in year four in the 2023/24
school year

→ www.ruesselsheim.de

Table of contents

Foreword.....	3
1 What is the school guide?.....	4
The school guide in different languages	5
2 Finding the right school.....	7
3 School change procedure.....	10
4 Schools in Rüsselsheim.....	15
School portraits.....	18
Performance differentiation.....	36
5 Inclusion.....	38
Reimbursement of travel expenses.....	40
Advice and support	41
Dates	42

Legal Notice:

Publisher: Magistrat der Stadt Rüsselsheim am Main,
Fachbereich Bildung und Betreuung

Editor: Andrea Britsch,

Andrea.Britsch@ruesselsheim.de Illustrations: Roman Köller

Circulation: 1,000 copies

Updated: Autumn 2023



DEAR PARENTS,

The transition from primary to secondary school is an important milestone in your child's life. As parents, you have the right to choose the right school for your child and thus promote their abilities and interests in an optimal manner.

In Rüsselsheim, we have a wide range of schools and you, as parents of fourth years, have the choice. Because in Hesse, the will of the parents is anchored in the School Act. This means that as a rule, the choice of educational path after primary school is up to the parents. This also applies if your child has been identified as needing support.

Choosing the right secondary school from the wide range on offer is a particular challenge and often associated with numerous questions.

That is why the schools and the State Education Authority in Rüsselsheim am Main are there to advise you. The class teachers give a justified recommendation for the educational path they consider suitable for your child with the year 4 half-year report card. In addition, all secondary schools offer information days to introduce themselves with their educational concept and their special profile.

After that, it is up to you to make the best decision for your child.

The school guide is intended to provide you with an overview of the offers and all important dates. I suggest you also take advantage of the opportunity to gain information directly from the schools during the information days.

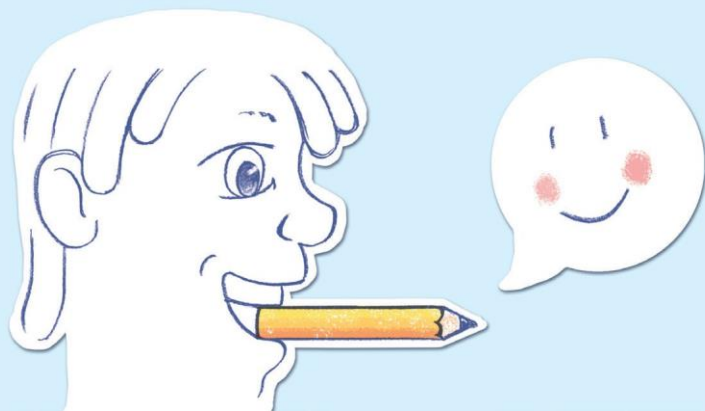
I wish you and your child a good start at the new school and much success on the further educational path.

Kind regards,

A handwritten signature in blue ink, which appears to be "Dennis Grieser".

Dennis Grieser
Mayor

1



What is the school guide

The school guide provides parents and pupils who are transferring from primary school to secondary school with information on the various school types.

The guide includes topics such as choice of foreign language, lunch, and full-day options. It provides information on the application process and contains a directory of all secondary schools in Rüsselsheim. The Rüsselsheim school guide helps both parents and pupils to find the right school.



THE SCHOOL GUIDE IN DIFFERENT LANGUAGES



Co to jest „Schulwegweiser“?

Schulwegweiser (informator szkolny) informuje rodziców i uczniów, którzy przechodzą ze szkoły podstawowej do szkoły ponadpodstawowej o poszczególnych rodzajach szkół. Poradnik obejmuje takie tematy, jak wybór języka obcego, obiady i całonocne oferty edukacyjne. Daje wskazówki odnośnie zapisywania się do szkoły oraz zawiera spis wszystkich szkół ponadpodstawowych w Rüsselsheim. Informator szkolny wspiera zarówno rodziców, jak i uczniów podczas szukania odpowiedniej szkoły. Skanując kod QR przechodzisz do wersji online w swoim języku.



Qu'est-ce que le Schulwegweiser?

Le Schulwegweiser présente aux parents et aux élèves qui quittent l'école primaire les différents types d'école secondaire qui s'offrent à eux. Ce guide aborde des questions comme le choix des langues étrangères, le repas de midi et les offres d'enseignement à temps plein. Il fournit des informations sur le processus d'inscription et contient une liste de toutes les écoles secondaires de Rüsselsheim. Il aide ainsi parents et élèves à trouver l'école adéquate. Scannez le code QR pour accéder à la version en ligne dans votre langue.



Ο σχολικός οδηγός ενημερώνει τους γονείς και τους μαθητές/ τις μαθήτριες που μεταπηδούν από το δημοτικό σχολείο σε ένα σχολείο δευτεροβάθμιας εκπαίδευσης σχετικά με τους επιμέρους τύπους σχολείων. Ο οδηγός περιλαμβάνει θεματικές ενότητες όπως η επιλογή ξένης γλώσσας, τα μεσημεριανά γεύματα και τα προσφερόμενα ολοήμερα προγράμματα. Παρέχει πληροφορίες για τη διαδικασία εγγραφής και περιλαμβάνει μια λίστα με όλα τα σχολεία δευτεροβάθμιας εκπαίδευσης στο Ρούσελσχαϊμ. Ο σχολικός οδηγός παρέχει υποστήριξη τόσο στους γονείς όσο και στους μαθητές/ στις μαθήτριες για την εύρεση του κατάλληλου σχολείου. Χρησιμοποιήστε τον κωδικό QR που εμφανίζεται για να αποκτήσετε πρόσβαση στην ηλεκτρονική έκδοση στη γλώσσα σας.



¿Qué es la guía escolar?

La guía escolar informa a los padres y alumnos/as que pasan de la escuela primaria a la secundaria sobre los distintos tipos de escuela. La guía incluye temas como la elección de lenguas extranjeras, la comida y la oferta de actividades durante todo el día. Informa sobre el procedimiento de solicitud y contiene una lista de todos los centros de enseñanza secundaria de Rüsselsheim. La guía escolar ayuda tanto a los padres como a los alumnos/as a encontrar el centro adecuado. Utilice el código QR para acceder a la versión en línea en su idioma.



THE SCHOOL GUIDE IN DIFFERENT LANGUAGES

 Okul kılavuzu nedir?


Okul kılavuzu, ilkokuldan ortaokula geçen velileri ve öğrencileri okul türleri hakkında bilgilendirir. Kılavuzda yabancı dil seçimi, öğle yemeği ve tüm gün ikramları gibi konular yer alıyor. Kayıt süreci hakkında bilgi verir ve Rüsselsheim'deki tüm ortaöğretim okullarının bir listesini içerir. Okul kılavuzu hem ebeveynleri hem de öğrencileri doğru okulu bulma konusunda destekler. Kendi dilinizdeki çevrimiçi sürüme erişmek için gösterilen QR kodunu kullanın.

ما هو دليل المدارس؟

يمنح دليل المدارس معلومات لأبناء والتلاميذ ممن يُريدون التبدل من المدرسة الابتدائية إلى المدرسة ويضم الدليل، التكميلية حول أنواع المدارس الفردية موضوعات، مثل اختيار اللغات الأجنبية، ووجبات كما يوقر إرشادات حول الغذاء وعروض اليوم الكامل إجراءات التسجيل، ويحتوي على دليل لجميع المدارس إلى جانب ذلك، يدعم التكميلية في مدينة روزلسهايم دليل المدارس أولياء الأمور والتلاميذ في إيجاد المدرسة استخدم كود الاستجابة السريعة المناسبة (QR) المعروف للوصول إلى النسخة الإلكترونية (QR) بلغتك.

 Що таке Schulwegweiser?

Schulwegweiser інформує батьків та учнів, які переходять з початкової до середньої школи, про окремі типи шкіл. Цей довідник містить такі теми, як вибір іноземної мови, обіди та пропозиції щодо груп повного дня. У ньому даються вказівки стосовно процедури реєстрації та міститься список всіх середніх шкіл у Рюссельгаймі. Schulwegweiser підтримує як батьків, так і учнів у пошуку потрібної школи. За допомогою показаного QR- коду можна отримати доступ до онлайн- версії вашою мовою.

 What is the school guide?

The school guide provides parents and pupils who are transferring from primary school to secondary school with information on the various school types. The guide includes topics such as choice of foreign language, lunch, and full-day options. It provides information on the application process and contains a directory of all secondary schools in Rüsselsheim. The school guide helps both parents and pupils to find the right school. Use the QR code shown to access the online version in your language.



Find the right school

Fachstelle Jugendberufshilfe
Stadt Rüsselsheim am Main
Fachbereich Bildung und Betreuung
Bereich Ganztagsangebote/Schulsozialarbeit
Ferdinand-Stuttman-Str. 15
65428 Rüsselsheim am Main Tel:
06142 83-2449
Email: Andrea.Britsch@ruesselsheim.de

Rüsselsheimer Netzwerk der
Integrationslotsinnen und Integrationslotsen
Ferdinand-Stuttman-Str. 5
65428 Rüsselsheim am Main Office hours:
Mon 10 am – 12 pm
Wed 10 am – 12 pm
Thu 4 pm – 6 pm
Tel: 06142 83-2205
Email: integrationslotsen@ruesselsheim.de

Choosing a secondary school is a serious task. The important thing is to find the school from the wide range of schools in Rüsselsheim that suits your child's interests and abilities. Whichever school type you and your child choose, it is important to know:

Each type of school leads to a valuable school-leaving qualification – from a vocational qualification to the Abitur – and gives all pupils a good start to their professional future.

Different paths lead to the destination

Children are affected by many experiences and events during their school years, and performance can also change over time. The flexibility of the school system allows all pupils to find the appropriate path, adapt it over time and thus achieve the desired degree according to their learning pace.

A sense of achievement is motivating

Children are affected both by being under as well as over-challenged. Parents should therefore choose a type of school that meets the child's requirements and performance potential. This gives the child a sense of achievement and builds confidence in their own ability.

Counselling offers security

Questions can best be clarified in a personal conversation. Each school offers a wide range of counselling services for parents and pupils to take advantage of. The respective class or counselling teachers or, if necessary, the school social workers are available for this purpose.

When making your selection, the following questions offer guidance:

Questions to ask yourself and your child:

- Which secondary school does my child want? And why?
- What schools are located close to home?
- Which school journey can my child cope with and do I want them to have?
- Does my child need a lot of help with homework and preparing for classwork?

Questions to ask the secondary school:

- What subject specializations do the schools offer (for example, math/science, arts, or sports)?
- What foreign languages does the new school offer?
- Does the school have support services or support courses?

Questions for the primary school:

- What recommendation, related to the educational programme, is made and how is it justified?
- Has my child learned independently and without major difficulties in school so far?
- What learning pace is appropriate for my child?



3

School change procedure

The decision on the course of education after primary school is, in principle, a matter for the parents. During this decision-making process, parents are supported by the teachers of the primary and secondary schools and receive detailed information.

At the beginning of your decision process for a secondary school, in-depth counselling is held with your class teacher. Your class teacher will invite you to such a counselling appointment by 25 February 2024. The goal of support and counselling for parents is to find an educational path for your child that will enable them, according to their individual abilities, to learn.

To gain an impression of the range of secondary schools in Rüsselsheim, information events are offered at your primary school and the secondary schools. Furthermore, it is possible to get to know the secondary schools during the open days. The dates can be found on p. 42 of this brochure.

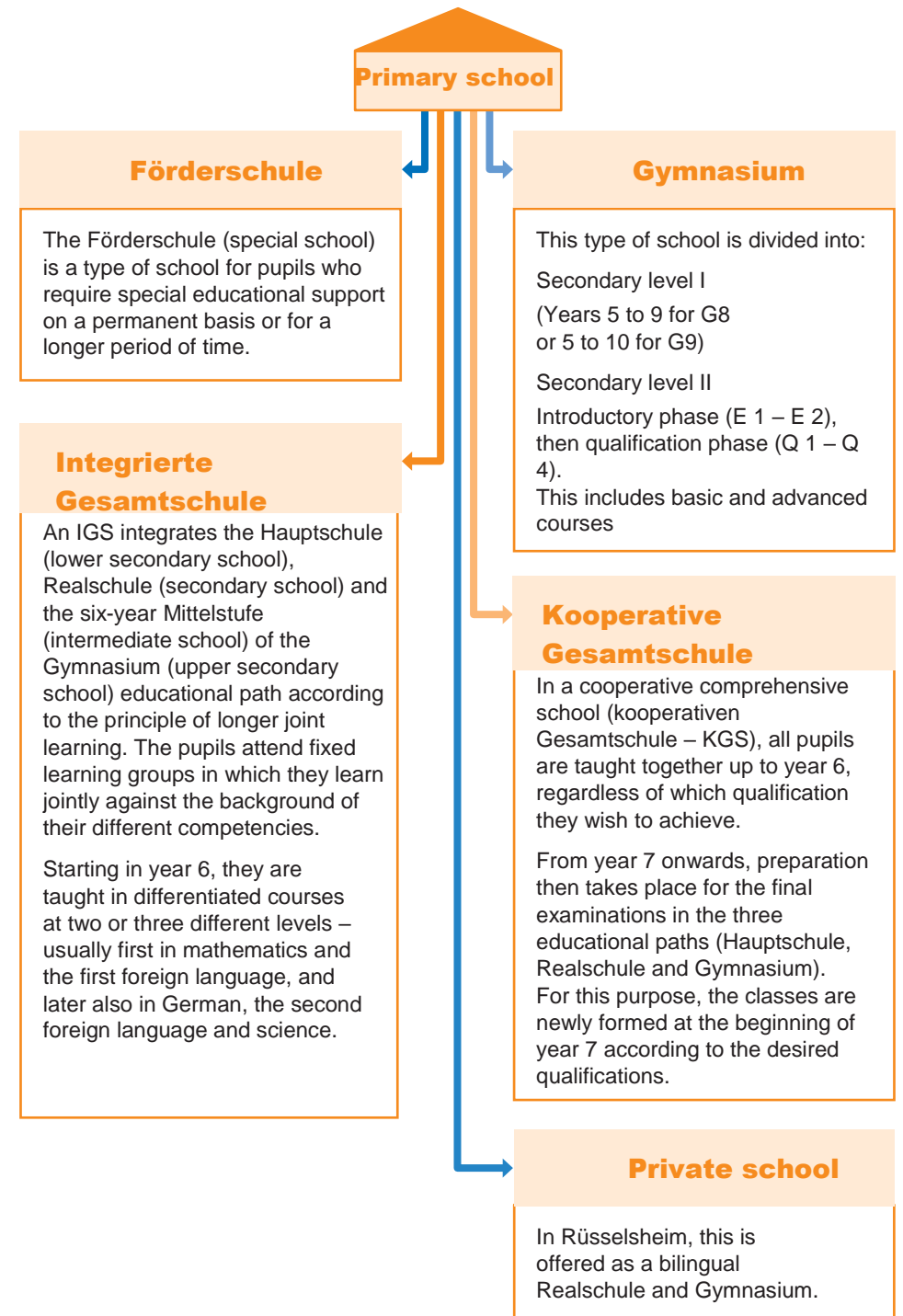
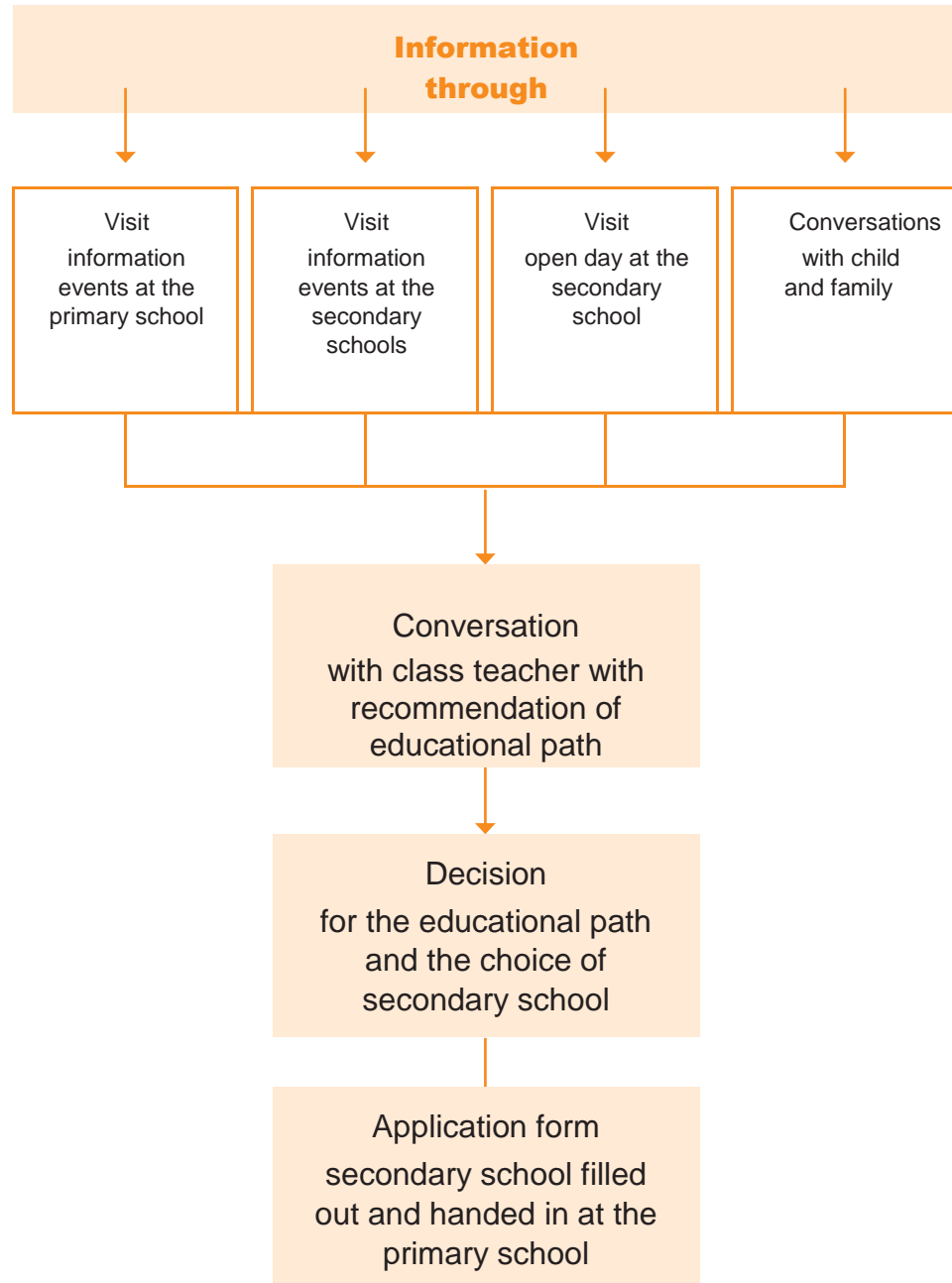
You will receive the application form for the choice of secondary school from your primary school.

Further information on the transition to secondary school can be found in the Hessian School Act (Sections 77 – 81) or at <https://kultusministerium.hessen.de/>

Checklist for changing schools

- Meeting with class teacher
- Visit the information evenings
- Visit the open days
- Fill out application form.

School change procedure



Vergleiche nie ein Kind mit dem Anderen, sondern nur mit sich selbst!

Johann Heinrich Pestalozzi (1746 – 1827) Swiss educator

4



Schools in Rüsselsheim

Schools in Rüsselsheim



BORNRABENSCHULE

Förderschule // Stadt Rüsselsheim

Im Apfelgarten 3

65428 Rüsselsheim am Main Tel: 06142 550760

www.borngrabenschule.de



HELEN-KELLER-SCHULE

Förderschule // Stadt Rüsselsheim Elsa-

Brandström-Allee 11

65428 Rüsselsheim am Main Tel: 06142 3019310

www.helen-keller-ruesselsheim.de



ALEXANDER-VON-HUMBOLDT-SCHULE

Integrierte Gesamtschule // Stadt Rüsselsheim

Hessenring 75

65428 Rüsselsheim am Main Tel: 06142 95450

www.alexander-von-humboldt-schule.de



GERHART-HAUPTMANN-SCHULE

Integrierte Gesamtschule // Stadt Rüsselsheim

Im Reis 51

65428 Rüsselsheim am Main Tel: 06142 310010

www.g-h-s.net



SOPHIE-OPEL-SCHULE

Kooperative Gesamtschule // Stadt Rüsselsheim

Ernst-Reuter-Straße 11-15

65428 Rüsselsheim am Main Tel: 06142 963080

sophie-opel-schule.de



IMMANUEL-KANT-SCHULE

Gymnasium // Stadt Rüsselsheim

Evreuxring 25

65428 Rüsselsheim am Main

Tel: 06142 603390

www.lks-ruesselsheim.de



MAX-PLANCK-SCHULE

Gymnasium // Stadt Rüsselsheim

Joseph-Haydn-Straße 1

65428 Rüsselsheim am Main

Tel: 06142 836770

www.max-planck-schule.de



NEUES GYMNASIUM

Gymnasium // Kreis Groß-Gerau

Grundweg 6

65428 Rüsselsheim am Main

Tel: 06142 2101880

www.neues-gymnasium-ruesselsheim.de



OBERMAYR EUROPA-SCHULE

Bilinguale Realschule/Bilinguales

Gymnasium Privatschule // Private school

Johann-Sebastian-Bach-Straße 57

65428 Rüsselsheim am Main

Tel.: 06142 5507810

www.Obermayr-education.com

NOTES

HELEN-KELLER-SCHULE School with a focus on mental development	Hessenring 75, 65428 Rüsselsheim am Main Tel: 06142 301930 Fax: 06142 3019315 poststelle@HKS.ruesselsheim.schulverwaltung.hessen.de www.helen-keller-ruesselsheim.de School management: NN
LESSONS/WEEK	36 hours per week
ALL-DAY OPERATION/AFTERNOON CARE	Profile level 3: The pupils receive instruction in the mornings and afternoons, and lunch is provided on a regular basis.
LUNCH/MENSA	Daily offer, obligatory as part of class lessons in the competence area "self-sufficiency"
SEQUENCE OF LANGUAGES	./.
PERFORMANCE DIFFERENTIATION	The individual support plan is the basic instrument of all lessons: <ul style="list-style-type: none"> · Individualized support extends to the entire competence development and enhancement of the pupils · Taking into account the individual learning situations of the learning group, the support goals in the competence areas are developed and the teaching and educational goals that are aimed at for the pupils are determined. · Individualized instruction builds on the strengths of individual pupils. · Measures of extracurricular institutions (youth or social welfare, physiotherapy, speech therapy and occupational therapy as well as other extracurricular offers) are coordinated with the support.

SUPPORT OFFERS	<ul style="list-style-type: none"> · Learning at extracurricular venues · Cooperative action-oriented learning · Individualization and differentiation · Interdisciplinary special needs education · Learning according to TEACCH
CLUB OFFERS	./.
PROFILE/ CERTIFICATION	<ul style="list-style-type: none"> · Department with a focus on physical and motor development · Language and communication (augmentative and alternative communication), movement and mobility · Football, swimming, judo, bocce, athletics, basic movement, aesthetics and creativity · Music class, school choirs, theatre groups, art workshop · Information and communication technology basic education · Media projects, I-Pad class, work and occupation · Pupil companies in different fields of activity
ELECTIVE COURSES/ ELECTIVE LESSONS	As part of guided activity and learning time: Physical activity and sports, traffic education, environment and technology, information and communication technology, aesthetics and creativity
SCHOOL EXCHANGE PROGRAMMES	./.
VOCATIONAL AND STUDY ORIENTATION	As a rule, three obligatory company internships in the vocational-orientation stage Several pupil companies with different fields of activity
RELIGIOUS EDUCATION	Mixed denominational religious education
POSSIBLE QUALIFICATIONS	Graduation from school with special focus on mental development

ALEXANDER-VON-HUMBOLDT-SCHULE Integrierte Gesamtschule (integrated comprehensive school)	Hessenring 75, 65428 Rüsselsheim am Main Tel: 06142 95450 Fax: 06142 954535 humboldt-schule@t-online.de www.alexander-von-humboldt-schule.de School management: Svenia Bormuth
LESSONS/WEEK	24 times 60 minutes per week
ALL-DAY OPERATION/AFTERNOON CARE	<ul style="list-style-type: none"> · Educational after-school care: Mon – Thu until 3.45 pm, Fri until 2.15 pm · Mandatory learning times, morning and afternoon
LUNCH/MENSA	All weekdays
SEQUENCE OF LANGUAGES	<ul style="list-style-type: none"> · English, compulsory 1st foreign language from year 5 · French or Spanish, compulsory 2nd foreign language from year 7 (elective lessons)
PERFORMANCE DIFFERENTIATION	See table page 36/37
SUPPORT OFFERS	<ul style="list-style-type: none"> · Reading support, mathematics support, support for reading and spelling difficulties · Support for learning difficulties · Free tutoring for pupils of year 5 by pupils of year 10
CLUB OFFERS	Language certificates (DELTA, TELC) English, mathematics, German in preparation for upper-secondary level; science research group; Sports, dance, theatre clubs; writing workshop, reading scouts; math scouts; sports scouts; school paramedics; study preparation club
PROFILE/ CERTIFICATION	Specialization in the area of natural sciences (NaWi): experimental instruction, two hours in years 5 and 6; activity-oriented subject

PROFILE/ CERTIFICATION	<ul style="list-style-type: none"> · Dance-sport-enthusiastic school with extensive club offer · Tablet projects · MINT (Mathematics, Informatics, Natural Sciences and Technology) · PUSCH (Practice and School) in cooperation with Kultur123, Adult Education Centre
ELECTIVE COURSES/ ELECTIVE LESSONS	<ul style="list-style-type: none"> · Year 5 Computer Driving License · Year 6 Early French, Mathematics Kangaroo Competition · Year 7 French, Spanish, computer science and robotics I, performing arts, art · Year 9 Robotics II; wood and metal work, art · Year 10 Debating club, bilingual politics classes, bilingual science classes."
SCHOOL EXCHANGE PROGRAMMES	<ul style="list-style-type: none"> · Italy (Bergamo/with company internship) · France (Niederbronn-les Bains/peace trip) · France (Nancy/international meeting)
VOCATIONAL AND STUDY ORIENTATION	<ul style="list-style-type: none"> · Two-week internships in year 8 and 9 · Regular consultation hours of the Federal Employment Agency's career counselling · Competence assessment (KomPo7) · Vocational orientation 8 with parental involvement · Job application training 9 with regional partners · Vocational orientation day 10 with participation of regional companies, future workshop in cooperation with the IHK
RELIGIOUS EDUCATION	Protestant, Catholic, Ethics
POSSIBLE QUALIFICATIONS	Vocationally oriented qualification, lower-secondary qualification, secondary qualification, Addition: After graduating from the Realschule, pupils are eligible to transfer to the upper-secondary level or the vocational Gymnasium, where they can obtain the Abitur.

GERHART-HAUPTMANN-SCHULE Integrierte Gesamtschule (integrated comprehensive school)	Im Reis 51, 65428 Rüsselsheim am Main Tel: 06142 310010 Fax: 06142 3100115 mail@g-h-s.net www.g-h-s.net School management: Sabine Dorweiler-Wegert
LESSONS/WEEK	30 – 34 hours per week (according to year)
ALL-DAY OPERATION/AFTERNOON CARE	<ul style="list-style-type: none"> · Educational after-school care: Monday – Thursday: 7.30 am until 4.00 pm; Friday: 7.30 am until 2.30 pm · Compulsory lessons on up to two afternoons until 3.30 pm Learning times, support courses and study groups
LUNCH/MENSA	All weekdays
SEQUENCE OF LANGUAGES	<ul style="list-style-type: none"> · English, compulsory 1st foreign language from year 5 · French or Spanish, compulsory 2nd foreign language from year 7
PERFORMANCE DIFFERENTIATION	See table page 36/37
SUPPORT OFFERS	Subject-related support teaching (German, mathematics, English) As well as reading and spelling courses and German as a second language courses
CLUB OFFERS	Aide offer in the fields of music (e.g. school orchestra), art, sports, environmental protection (e.g. school garden, upcycling), natural science, pupil company "Good Stuff" SGmbH, school paramedics and much more
PROFILE/ CERTIFICATION	<ul style="list-style-type: none"> · Class music making with wind instruments (year 5 and 6)

PROFILE/ CERTIFICATION	<ul style="list-style-type: none"> · Computer science lessons from year 5 · Vocational orientation
ELECTIVE COURSES/ ELECTIVE LESSONS	<ul style="list-style-type: none"> · Work-technical lessons (wood, metal, informatics) · Cooking and healthy food, first aid · Arts, performing arts · Science, mathematics · History, sport
SCHOOL EXCHANGE PROGRAMMES	Voluntary additional offers: <ul style="list-style-type: none"> · England (Eastbourne) · Poland (Auschwitz/study trip)
VOCATIONAL AND STUDY ORIENTATION	<ul style="list-style-type: none"> · Competence assessment (KomPo7) · Internships lasting several weeks in years 8 and 9 · Regular consultation hours of the Federal Employment Agency's career counselling · Company visits and cooperation with companies in the region
RELIGIOUS EDUCATION	Protestant, Catholic, Ethics
POSSIBLE QUALIFICATIONS	Vocationally oriented qualification, lower-secondary qualification, secondary qualification Addition: After graduating from the Realschule, pupils are eligible to transfer to the upper-secondary level or the vocational Gymnasium, where they can obtain the Abitur.

NOTES	
-------	--

SOPHIE-OPEL-SCHULE	Ernst-Reuter-Str. 11–15, 65428 Rüsselsheim am Main Tel: 06142 963080 info@sophie-opel-schule.de www.sophie-opel-schule.de School management: Jens Krämer
Kooperative Gesamtschule (cooperative comprehensive school)	
LESSONS/WEEK	<ul style="list-style-type: none"> · 30 – 35 hours per week (according to year) · 4x 90 minutes blocks per day: Classes, participation in study groups and support classes
ALL-DAY OPERATION/AFTERNOON CARE	<p>Educational after-school care: Monday – Thursday until 3.30 pm, Friday until 2 pm</p> <p>Compulsory all-day classes on one or two afternoons, daily study groups, talent workshops for years 5 and 6</p>
LUNCH/MENSA	All weekdays
SEQUENCE OF LANGUAGES	<ul style="list-style-type: none"> · English, compulsory 1st foreign language from year 5 for all educational paths <p>Realschule educational path:</p> <ul style="list-style-type: none"> · French or Spanish, optional 2nd foreign language from year 7 (elective offer) <p>Gymnasium educational path:</p> <ul style="list-style-type: none"> · English, compulsory 1st foreign language from year 5 · French or Spanish, compulsory 2nd foreign language from year 7 · French, optional 3rd foreign language from year 9 (elective offer)
PERFORMANCE DIFFERENTIATION	See table page 36/37
SUPPORT OFFERS	<ul style="list-style-type: none"> · Mentor system · Individual support classes for pupils with learning difficulties

SUPPORT OFFERS	<ul style="list-style-type: none"> · Self- and project-oriented learning as an independent subject
CLUB OFFERS	Media-AG (Radio Rüsselsheim and other media), fire department, school paramedics, flag football, music club, Cajon club, Löwen-Stark, "German meets football", girls' football and much more The offer may change annually
PROFILE/ CERTIFICATION	<ul style="list-style-type: none"> · Vocational and study orientation · Interdisciplinary and activity-oriented science lessons in years 5 – 6 · Interdisciplinary and activity-oriented teaching in physics, chemistry and biology in years 7 – 10 · School clothing mandatory for all pupils
ELECTIVE COURSES/ ELECTIVE LESSONS	<ul style="list-style-type: none"> · Natural sciences · Technical education (wood, metal, information technology) · Cooking and healthy food · Sport and art
SCHOOL EXCHANGE PROGRAMMES	<ul style="list-style-type: none"> · England (in planning) · France (in planning) · Spain
VOCATIONAL AND STUDY ORIENTATION	<ul style="list-style-type: none"> · Company visits and career fairs · Competence assessment (KomPo7) · Regular consultation hours of the Federal Employment Agency's career counselling
RELIGIOUS EDUCATION	Protestant, Catholic, Ethics
POSSIBLE QUALIFICATIONS	Vocationally oriented qualification, lower-secondary qualification, secondary qualification Addition: After graduating from the Realschule, pupils are eligible to transfer to the upper-secondary level or the vocational Gymnasium, where they can obtain the Abitur.

IMMANUEL-KANT-SCHULE Gymnasium Stadt Rüsselsheim am Main	Evreuxring 25, 65428 Rüsselsheim am Main Tel: 06142 603390 Fax: 06142 6033915 office@iks-ruesselsheim.de www.iks-ruesselsheim.de School management: Bea König
LESSONS/WEEK	28 – 34 hours per week (according to years) Classes according to G9 schedule Sports and music profile classes (one additional hour per week)
ALL-DAY OPERATION/AFTERNOON CARE	<ul style="list-style-type: none"> · Educational after-school care: Monday until Thursday until 2.50 pm (years 5 and 6) · Wide range of afternoon clubs for all years
LUNCH/MENSA	All weekdays, bistro
SEQUENCE OF LANGUAGES	<ul style="list-style-type: none"> · English, compulsory 1st foreign language from year 5 · French or Latin, compulsory 2nd foreign language from year 7 · Spanish, optional 3rd foreign language from year 9 (elective lessons)
PERFORMANCE DIFFERENTIATION	<ul style="list-style-type: none"> · All pupils are taught together, taking into account their personal interests and learning needs, within the framework of the regular subject lessons: (internal differentiation) · Targeted performance support through participation in competitions (Jugend forscht, Bio-Olympiade, etc.) · Sports class concept to support athletic talents · Teacher-coach (field hockey and judo): These teachers provide training for high-achieving pupils during school hours
SUPPORT OFFERS	<ul style="list-style-type: none"> · Differentiated support and remedial courses in the subjects German, mathematics and English

SUPPORT OFFERS	<ul style="list-style-type: none"> · School social work
CLUB OFFERS	<p>Numerous clubs on the school's focal points:</p> <ul style="list-style-type: none"> · Music (choir, orchestra, big band) · Sports (e.g. volleyball, climbing, football, field hockey) · STEM (e.g., computer science, robotics programming, etc.)
PROFILE/ CERTIFICATION	<ul style="list-style-type: none"> · School certified by the state of Hesse with a focus on music (music and wind classes) · Partner school for competitive sports, with affiliated Regional Talent Centre (RTZ), sports classes · MINT-friendly school certificate · Junior Engineer Academy Certificate, Telekom Foundation · Certification "Environmental School" – School Garden · Focus on social learning · Language certificates (Cambridge, DELF)
ELECTIVE COURSES/ ELECTIVE LESSONS	<p>Year 9 and 10</p> <ul style="list-style-type: none"> · 2-hour classes; areas: Music, sports and STEM, as well as art or performing arts · 3-hour classes, for Spanish 3rd foreign language
SCHOOL EXCHANGE PROGRAMMES	<ul style="list-style-type: none"> · France (Evreux, Lure, La Réunion) · USA (Oshkosh) · England (Hastings)
VOCATIONAL AND STUDY ORIENTATION	<ul style="list-style-type: none"> · Internships in years 9 and E-Phase · Career guidance by the Federal Employment Agency · Study advisory services at the universities and colleges of Mainz, Darmstadt and Frankfurt am Main · Geva tests for career choice · Application training Mentoring network
RELIGIOUS EDUCATION	Protestant, Catholic, Ethics
POSSIBLE QUALIFICATIONS	Lower-secondary qualification, secondary qualification, upper-secondary qualification

MAX-PLANCK-SCHULE Gymnasium Stadt Rüsselsheim am Main (Independent school)	Joseph-Haydn-Straße 1, 65428 Rüsselsheim am Main Tel: 06142 836770 Fax: 06142 8367715 poststelle@mps.ruesselsheim.schulverwaltung.hessen.de www.max-planck-schule.de School management: Marc Rhein
LESSONS/WEEK	28 – 32 hours (depending on year level and choice of subjects) Classes according to G9 schedule (28 hours per week)
ALL-DAY OPERATION/AFTERNOON CARE	<ul style="list-style-type: none"> · Educational afternoon care (free of charge): Monday to Thursday from 1.30 pm – 3.30 pm · Buch&Ball, educational afternoon care (fee required): Monday through Thursday from 1.30 pm – 3.30 pm (years 5 and 6)
LUNCH/MENSA	All weekdays, kiosk
SEQUENCE OF LANGUAGES	<ul style="list-style-type: none"> · English, compulsory 1st foreign language from year 5 · French, Latin or Spanish, compulsory 2nd foreign language from year 7 · French, Latin or Spanish, optional 3rd foreign language from year 9 (elective lessons)
PERFORMANCE DIFFERENTIATION	All pupils are taught together, taking into account their personal interests and learning needs, within the framework of the regular subject lessons: (Internal differentiation)
SUPPORT OFFERS	<ul style="list-style-type: none"> · German as a second language (DaZ) in years 5 and 6 · Support offers in the main subjects of years 5 – 7 · A wide range of additional offers for particularly gifted pupils in all years

CLUB OFFERS	There is a wide range of activities to choose from, with over 30 clubs in all areas: Theatre club, sport clubs (swimming and volleyball), junior or youth orchestra, botany club, Zoo club, environment club
PROFILE/ CERTIFICATION	<ul style="list-style-type: none"> · Certified MINT Excellence Centre (natural science focus) · Focus on "modern foreign languages with a bilingual line" · Focus "Theatre/Performing Arts" · Singing class concept in the lower school · Jugend forscht, Jugend präsentiert, Jugend debattiert
ELECTIVE COURSES/ ELECTIVE LESSONS	<ul style="list-style-type: none"> · French, Latin or Spanish, as voluntary 3rd foreign language · Computer science, performing arts, and other elective courses (based on the focus of the school programme) starting in year 9
SCHOOL EXCHANGE PROGRAMMES	<ul style="list-style-type: none"> · USA (Nashville/school exchange) · Spain (Madrid/for Spanish pupils) · France (Cournon d'Auvergne/school exchange) · Italy (Rome/for Latin pupils) · England (London/study trip)
VOCATIONAL AND STUDY ORIENTATION	<ul style="list-style-type: none"> · Internship in year 9 (compulsory) · Internship (qualifying) in qualification phase 1 of the upper-secondary level · Seminars for career orientation and application training · Getting to know the world of work in intermediate school, acquiring presentation skills · Individual career counselling by the Federal Employment Agency · Visiting training fairs
RELIGIOUS EDUCATION	Protestant, Catholic, Ethics
POSSIBLE QUALIFICATIONS	Lower-secondary qualification, secondary qualification, upper-secondary qualification

OBERMAYR EUROPA-SCHULE GMBH

Bilinguale Realschule Bilinguales Gymnasium Private school (subject to fees)

Johann-Sebastian-Bach-Straße 57,
65428 Rüsselsheim am Main
Tel: 06142 5507810
ruesselsheim@obermayr.co
m www.esr-aktuell.de
School management: Dr. Gerhard Obermayr

LESSONS/WEEK

32 hours + 8 hours free work

ALL-DAY OPERATION/AFTERNOON CARE

- Class times are from 8.00 am – 3.00 pm for all pupils
- Voluntary care offered daily from 3 pm – 5 pm

LUNCH/MENSA

Daily offer

SEQUENCE OF LANGUAGES

Language sequence Bilingual (bilingual) Realschule:

- English, compulsory 1st foreign language from year 7
- Spanish or French, mandatory 2. foreign language from year 7

Note on Realschule:

The Realschule course of education exists only from year 7. Years 5 and 6 are only available as a Gymnasium educational path

Language sequence bilingual Gymnasium:

- English, compulsory 1st foreign language from year 5
- Spanish or French, mandatory 2. foreign language from year 5
- Latin or computer science (elective course) from year 9

PERFORMANCE DIFFERENTIATION

- Parallel support:
A differentiated and intensive support phase taking place in parallel to the free work outside the classroom in the school, which is based on a support plan
- Voluntary support classes take place after school hours (from 3.15 pm). They are set up when pupils have particular difficulties in acquiring subject-related competencies in the main subjects
- DaZ (German as a second language)

SUPPORT OFFERS

German and mathematics

CLUB OFFERS

Fun & games, school newspaper, theatre, art, board games

PROFILE/ CERTIFICATION

Bilingual instruction from year 5 in some minor subjects (e.g. history, politics and economics)

ELECTIVE COURSES/ ELECTIVE LESSONS

Latin, computer science

SCHOOL EXCHANGE PROGRAMMES

No
(If desired, together with the Obermayr schools from Wiesbaden, Schwalbach and Taunusstein):

- Spain
- France

VOCATIONAL AND STUDY ORIENTATION

In year 8 in the subject of work studies

RELIGIOUS EDUCATION

Mixed denominational religious education

POSSIBLE QUALIFICATIONS

Secondary qualification
Addition: After graduating from the Realschule, pupils are eligible to transfer to the upper-secondary level or the vocational Gymnasium, where they can obtain the Abitur. Both courses can be attended at the Obermayr-Schule in Wiesbaden.

PERFORMANCE DIFFERENTIATION

ALEXANDER-VON-HUMBOLDT-SCHULE	GERHART-HAUPTMANN-SCHULE	SOPHIE-OPEL-SCHULE
CLASS 5		
Classroom instruction only: All pupils are taught together, taking into account their personal interests and learning needs (internal differentiation)	Classroom instruction only: All pupils are taught together, taking into account their personal interests and learning needs (internal differentiation)	Classroom instruction only: All pupils are taught together, taking into account their personal interests and learning needs (internal differentiation)
CLASS 6		
<ul style="list-style-type: none"> German and math/E or G course/in a class (differentiated subject performance differentiation) English/E or G course/external the class (external differentiation of subject performance) In the other subjects in class 	<ul style="list-style-type: none"> English and math/E or G course/in a class (differentiated subject performance differentiation) In the other subjects in class 	<ul style="list-style-type: none"> German, English, mathematics/A-B-C course/external from class (external subject differentiation) In the other subjects in class
CLASS 7		
<ul style="list-style-type: none"> German/E or G course/in class English/E or G course/external from class Mathematics/A-B-C course/external from class In the other subjects in class 	<ul style="list-style-type: none"> English, mathematics, German/E or G course/in class In the other subjects in class 	<ul style="list-style-type: none"> Classes are held in the respective educational programmes: Hauptschule, Realschule and Gymnasium branch

ALEXANDER-VON-HUMBOLDT-SCHULE	GERHART-HAUPTMANN-SCHULE	SOPHIE-OPEL-SCHULE
CLASS 8		
<ul style="list-style-type: none"> German, English, mathematics/A-B-C course/external from class In the other subjects in class 	<ul style="list-style-type: none"> English, mathematics, German / A-B-C course/external from class (external subject performance differentiation) In the other subjects in class 	Classes are held in the respective educational paths: Hauptschule, Realschule and Gymnasium branch instead of
CLASS 9		
<ul style="list-style-type: none"> German, English, mathematics/A-B-C course/external from class Physics, chemistry, biology/E or G course external from class In the other subjects in class 	<ul style="list-style-type: none"> English, mathematics, German, French or Spanish/A-B-C course/external from class In the other subjects in class 	Classes are held in the respective educational paths: Hauptschule, Realschule and Gymnasium branch instead of

Pupils are assigned according to their individual abilities to:

E or G courses

(E course = extension course, G course = basic course)

or

A-B-C courses

(A course = Gymnasium level, B course = Realschule level, C course = Hauptschule level)

.....

• NOTES
.....

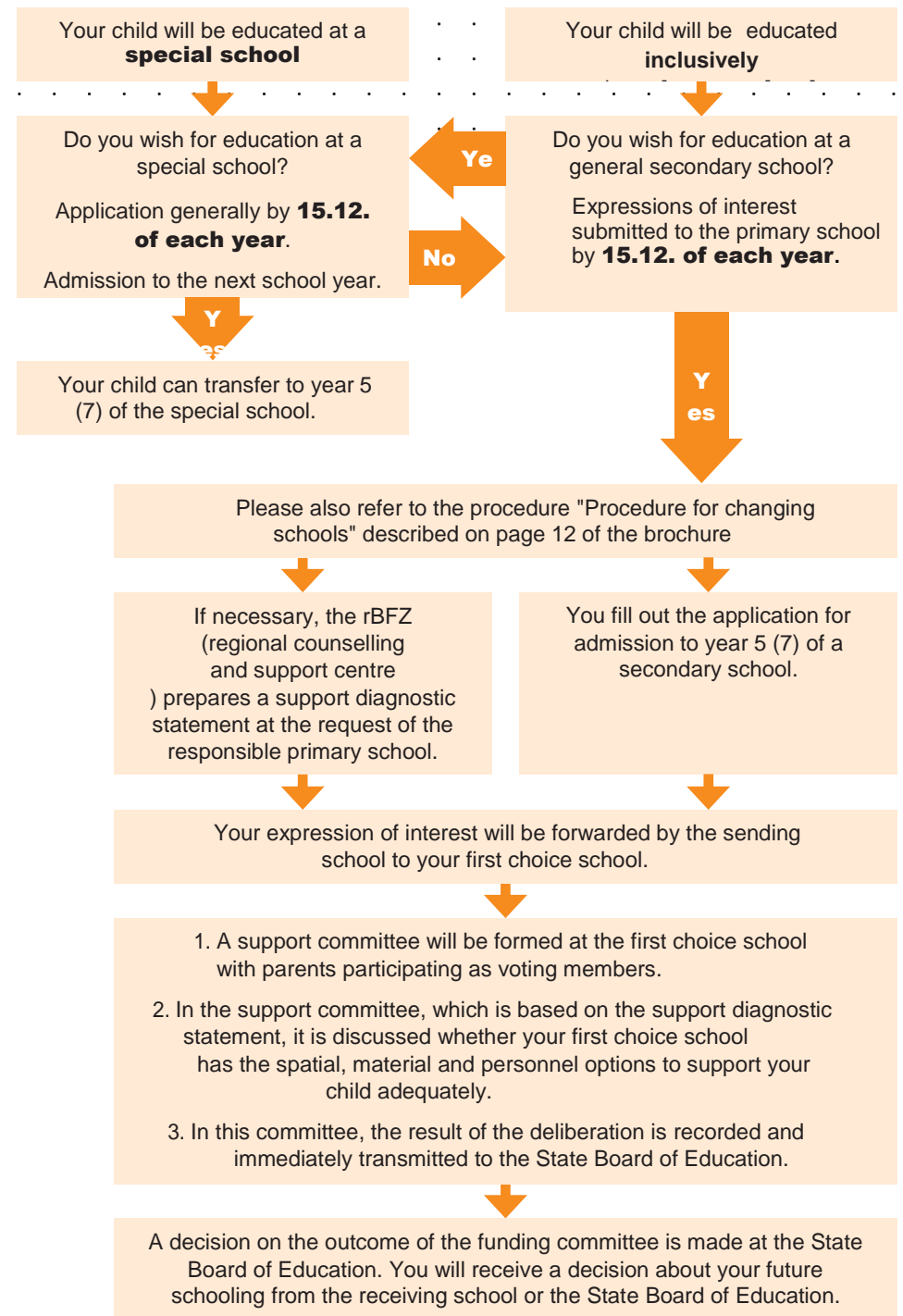
5



Inclusion

The goal of school development planning in Rüsselsheim is to enable longer joint learning for all pupils. This is intended to create the conditions to implement modern inclusive education and for a good all-day program, thus contributing to greater educational equity.

Rüsselsheim offers pupils with an established entitlement to special educational support various school options: The rule is attendance at a general school as part of inclusive education. Alternatively, there is the possibility to attend a special school. The graphic on page 39 gives you a first impression of the registration process. Furthermore, the Regional Counselling and Support Centre at the Borngrabenschule is available as a competent point of contact for your questions (contact information can be found on page 41).



REIMBURSEMENT OF TRAVEL EXPENSES ADVICE AND SUPPORT

According to Section 161 of the Hessian School Act, parents can apply for reimbursement of travel costs.

A claim for reimbursement of the cost of pupil transportation to school exists if:

- The pupil lives in the area of the school authority Rüsselsheim
- The distance to the secondary school attended is longer than three kilometres. The **shortest walking distance** between home and school is decisive.

Entitlement to reimbursement of travel expenses exists up to year 10 if a general education school is attended

(Hauptschule/Realschule/Gymnasium/integrated comprehensive school/cooperative comprehensive school).

Application forms are available at the school or from the Education and Support Department of the City of Rüsselsheim, as well as from the City Offices of the City of Rüsselsheim.

Further information and application forms for download can be found on the homepage of the city of Rüsselsheim: www.ruesselsheim.de.



Your contact person:

Katja Heumann

Tel.: 06142 83-2719

Fax: 06142 83-2748

schuelerbefoerderung@ruesselsheim.de

Staatliches Schulamt für den Landkreis Groß-Gerau und Main-Taunus-Kreis

Walter-Flex-Straße 60-62
65428 Rüsselsheim
Tel.: 06142 55000

Duties include:

- Advising schools in the performance of their duties
- Counselling of parents, pupils and teachers

► Schulpsychologischer Dienst
Walter-Flex-Straße 60-62
65428 Rüsselsheim

Tel.: 06142 55000

Duties include:

- Counselling of pupils (e.g. in case of fears, bullying, psychological problems, school avoidance)
- Counselling of pupils in case of conflicts at school/at home
- Counselling for parents
- School career counselling

► Aufnahme- und Beratungszentrum (ABZ)

Walter-Flex-Straße 66
65428 Rüsselsheim
Tel.: 06142 55000

Contact point for newly arrived children and young people from abroad with little or no knowledge of German. Counselling service for school-age and vocational school-age newcomers and their families to determine the language and learning level of children and adolescents to find a suitable school for them

Regionales Beratungs- und Förderzentrum Rüsselsheim

Im Apfelgarten 3
65428 Rüsselsheim
Tel.: 06142 550760

- Support and advise pupils with difficulties in learning, in their emotional and social development or with language
- Conduct tests to determine where problems exist with learning or language
- Support pupils in small groups or individually
- Advise parents on how to support their child at home or who can provide additional support outside of school

SCHOOL SOCIAL WORK

To support the pupils, almost all schools have school social workers. Educators:

- Lead offers in social learning and class reinforcement projects by
- advising on problems at school
- Support pupils, parents and teachers in everyday school life

EDUCATION AND PARTICIPATION PACKAGE

If your child is entitled to benefits according to the Social Security Code II (SGB II – especially Unemployment Benefit II or Social Money), Social Security according to SGB XII, housing allowance or child supplement or receives benefits according to the Asylum Seekers Benefits Act, you can also claim benefits from the Education and Participation Package. These include, for example:

The assumption of lunch costs, school trips and excursions or a subsidy for school supplies and learning support.

DATES



INFORMATION EVENTS OF SECONDARY SCHOOLS

Please also see current notices on the schools' homepages. For dates of information evenings at primary schools, please contact your primary school.

ALEXANDER-VON-HUMBOLDT-SCHULE	20.01.2024	Open day 9.30 am – 12 pm
GERHART-HAUPTMANN-SCHULE	24.11.2023	Information day 4.30 pm – 7 pm
IMMANUEL-KANT-SCHULE	25.11.2023	Open day 9.30 am – 1 pm
	29.01.2024	Parents' information evening 7 pm – 9 pm
MAX-PLANCK-GYMNASIUM	01.02.2024	Open day 5 pm – 8 pm
NEUES GYMNASIUM	27.01.2024	Open day/Parents' information evening 10am – 1 pm
OBERMAYR	18.11.2023	Open day 10am – 1 pm
SOPHIE-OPEL-SCHULE	25.11.2023	Open day 9 am – 12.30 pm



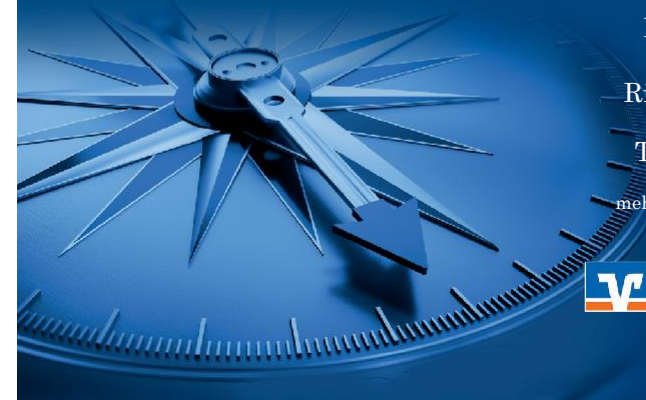
GRÜN IST DAS NEUE COOL!

Haben Sie den Dreh schon raus? Gut leben und dabei bestens leben. Unser Nachhaltigkeits-Kompass zeigt Ihnen einfache Wege:

Besser leben.
Gut wohnen.
Richtig anlegen.

Tesen Sie uns:

mehrwert.frankfurter-volksbank.de/kompass



Rüsselsheimer Volksbank
Zweigniederlassung der Frankfurter Volksbank Rhein-Main eG

Die Zukunft
soll man nicht
voraussehen wollen,
sondern
möglich machen.

Antoine de Saint-Exupéry (1900-44)
French aviator and writer



Konto ist einfach.

Wenn das Jugendgirokonto einfach mehr drauf hat. Mit

- ✓ **FirstGiro**
- ✓ **FirstGiro PLUS**
- ✓ **FirstCash**

ganz weit vorne. Jetzt informieren! kskgg.de/firstgiro

S

Kreissparkasse
Groß-Gerau